



DeepBlue

Sensor



V-model

Travel time, O/D matrices, incident detection, Online web based applications

Bluetooth, Wi-Fi, BLE, GPS, modem, Dual-SIM, Ethernet, Multi-color LED,

Wireless device detection, tracking, RTC Battery, Non-volatile memory

Field proven, easy set-up and configuration, multi-lane, side-fire,

Cost effective, Low power, Self-diagnostics, Autonomous,

Reliable and secure transmission

With our dedication to continuous development the specifications are subject to change. To verify the current information please visit www.deepbluesensor.com

Passionately designed by





DeepBlue

Sensor

POWER SUPPLY

12-48VDC
3.5W typical
PoE (Power over Ethernet)

CPU & MEMORY

ARM 9 Processor
128 MB RAM / Flash
Micro SD storage

COMMUNICATIONS

Ethernet
Internal modem
Dual SIM-Card slot
Remote Sensor Access

OPERATIONS

Linux based OS
LED for operations diagnostics

ENVIRONMENTAL

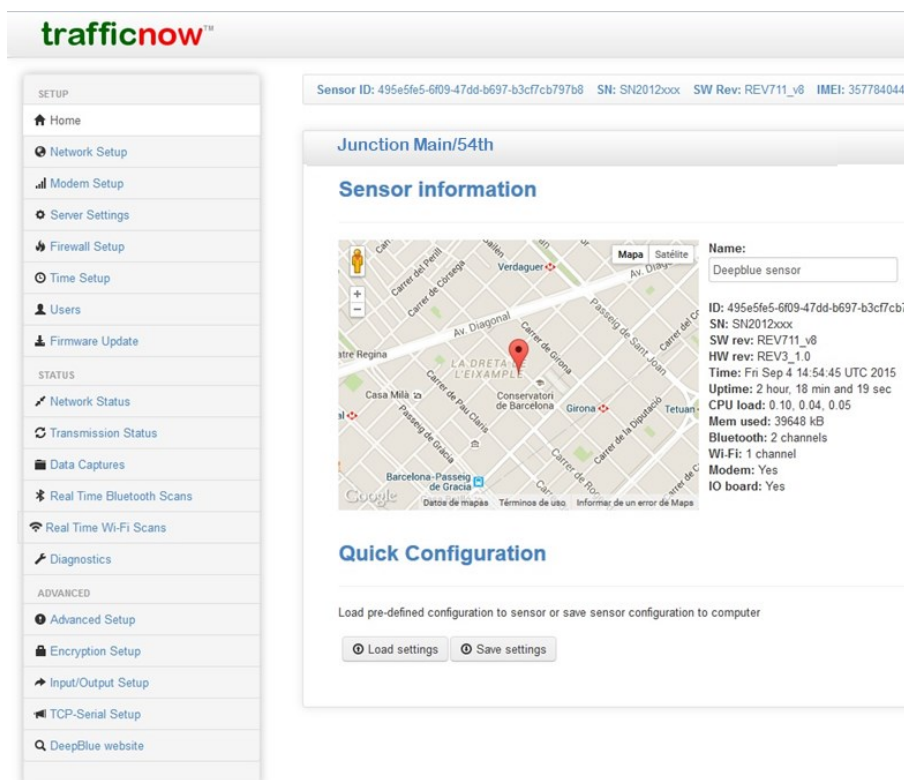
-40°C to +80°C
0-90% humidity
NEMA 4X / IP67 housing
Shock/vibration: NEMA TS2-2003

DIMENSIONS & WEIGHT

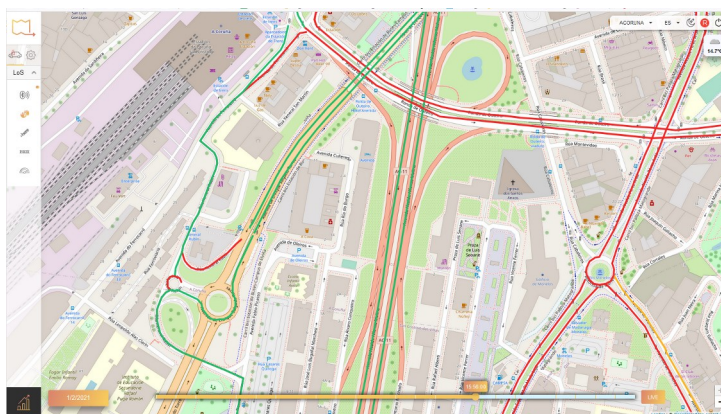
H x W x L 276 mm x 272 mm x 96.5 mm
2.00 kg

DETECTION

Bluetooth detection internal 15dBi antenna
Wi-Fi detection
BLE detection



V-model



REGULATORY

RoHS Compliant
CE, FCC, IC certified

With our dedication to continuous development the specifications are subject to change. To verify the current information please visit www.deepbluesensor.com

Passionately designed by

